

UDK 595.76  
DOI 10.52575/2712-9047-2022-4-3-247-249

## First Record of Invasive Longhorn Beetle *Phoracantha recurva* Newman, 1840 (Coleoptera: Cerambycidae) for Cyprus

Aleksey S. Sazhnev<sup>1</sup>, Varvara. A. Zvereva<sup>2</sup>

<sup>1</sup> Papanin Institute for Biology of Inland Waters Russian Academy of Sciences,  
135 Borok vill., Yaroslavl Oblast 152742, Russia

<sup>2</sup> The Grammar School,  
Katinas Paxinou St., 4007 P.O. Box 51340, 3504 Limassol, Cyprus  
E-mail: sazh@list.ru

Received August 2, 2022; Revised August 8, 2022; Accepted August 8, 2022

**Abstract.** For the first time, an invasive species of barbel beetles *Phoracantha recurva* Newman, 1840 (Coleoptera: Cerambycidae) is given for the territory of Cyprus. The species has a native range in Australia, but after eucalyptus (*Eucalyptus*), with which it is trophically related, it was introduced to almost all regions of the world, including the Mediterranean.

**Keywords:** beetles, fauna, Mediterranean, introduced organism, *Eucalyptus* borer

**Acknowledgements:** research by A.S. Sazhnev was supported by Ministry of Education and Science of Russian Federation, project No. 121051100109-1.

**For citation:** Sazhnev A.S., Zvereva V.A. 2022. First Record of Invasive Longhorn Beetle *Phoracantha recurva* Newman, 1840 (Coleoptera: Cerambycidae) for Cyprus. *Field Biologist Journal*, 4(3): 247–249. DOI: 10.52575/2712-9047-2022-4-3-247-249

---

## Первая находка инвазионного усача *Phoracantha recurva* Newman, 1840 (Coleoptera: Cerambycidae) на Кипре

А.С. Сажнев<sup>1</sup>, В.А. Зверева<sup>2</sup>

<sup>1</sup> Институт биологии внутренних вод им. И.Д. Папанина РАН,  
Россия, 152742, Ярославская обл., п. Борок, 101

<sup>2</sup> Британская школа The Grammar School,  
ул. Катинас Паксину, 4007 P.O. Box 51340, 3504 Лимассол, Кипр  
E-mail: sazh@list.ru

Поступила в редакцию 02.08.2022; принята после рецензирования 08.08.2022;  
принята к публикации 08.08.2022

**Аннотация.** Впервые для территории Кипра приводится инвазионный вид жуков-усачей *Phoracantha recurva* Newman, 1840 (Coleoptera: Cerambycidae). Вид имеет нативный ареал в Австралии, но вслед за эвкалиптом (*Eucalyptus*), с которым трофически связан, был завезен практически во все регионы мира, включая Средиземноморье.

**Ключевые слова:** жуки, фауна, Средиземноморье, интродукция видов, эвкалиптовый усач

**Благодарности:** работа А.С. Сажнева выполнена в рамках государственного задания Министерства науки и высшего образования РФ, проект № 121051100109-1.

**Для цитирования:** Sazhnev A.S., Zvereva V.A. 2022. First Record of Invasive Longhorn Beetle *Phoracantha recurva* Newman, 1840 (Coleoptera: Cerambycidae) for Cyprus. *Field Biologist Journal*, 4(3): 247–249. DOI: 10.52575/2712-9047-2022-4-3-247-249

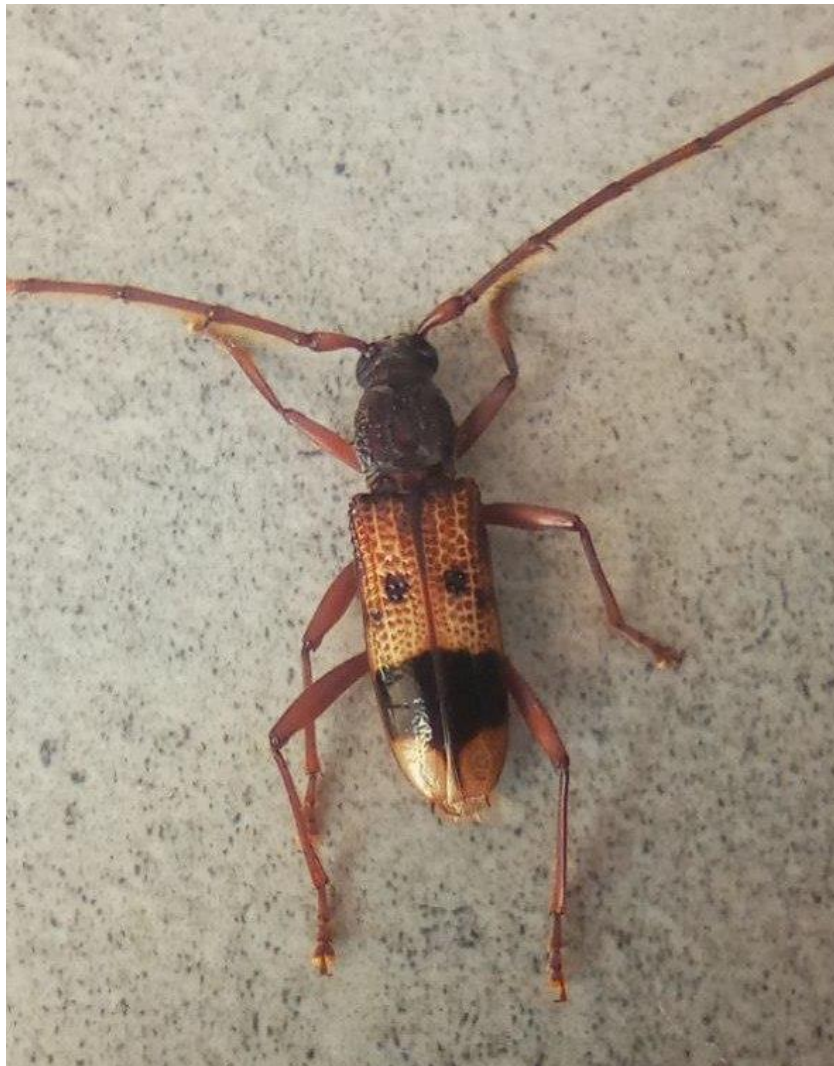
## Introduction

Now in most countries the introduction of *Eucalyptus* (this genus has been introduced all around the world in regions with adequate Mediterranean climate) was followed by that of this two wood borers of genus *Phoracantha* Newman, 1840 (Coleoptera: Cerambycidae), both also native to Australia. For Palaearctic Region two species of eucalyptus borers are known – *Phoracantha semipunctata* (Fabricius, 1775) and *Ph. recurva* Newman, 1840. The first species is recorded in Mediterranean from European part (France, Greece, Italy, Malta, Portugal, Spain), Asian part (Cyprus, Georgia, Israel, Jordan, Lebanon, Syria, Asian Turkey), and North Africa (Algeria, Canary Islands, Egypt, Libya, Morocco, Madeira Archipelago, and Tunisia) [Danilevsky, 2022]. Second species less distributed in the Palearctic and recorded for Cyprus in the first time.

## Results

*Phoracantha recurva* Newman, 1840 (see Figure).

EXAMINED MATERIAL: Cyprus, Famagusta Distr., Ayia Napa, 31 July 2020, 1 ex. V.A. Zvereva leg. Distribution in Palearctic: *Europe*: Greece, Italy, Malta, Portugal, Spain; *North Africa*: Canary Islands, Libya, Morocco, Tunisia; *Asia*: Cyprus (first record), Israel, Lebanon Syria, Asian Turkey. *Phoracantha recurva* also known from Afrotropical, Australian, Nearctic, and Neotropical Regions of the world.



*Phoracantha recurva* Newman, 1840 from Ayia Napa (Cyprus) (photo by V.A. Zvereva)  
*Phoracantha recurva* Newman, 1840 из Айя-Напы (Кипр) (фото В.А. Зверевой)

*Phoracantha recurva* was initially reported from Europe in 1998 in Ceuta (Spain) [EPPO, 2003]. There is also one record of *Phoracantha recurva* in Greece (one specimen on dying *Eucalyptus* in Preveza) [EPPO, 2003]. As *Eucalyptus* borers can fly great distances [Hanks et al., 1998] and are easily transported [Bosmans, 2006], it can be expected that *Phoracantha recurva* will be distributed in the Mediterranean as *Phoracantha semipunctata*.

### References

- Barranco P., Ruíz J.L. 2003. Aportaciones sobre el taladro amarillo de los eucaliptos, *Phoracantha recurva* Newman, 1840. *Phytoma España*, 147: 43–48.
- Bosmans B. 2006. *Phoracantha recurva* (Coleoptera: Cerambycidae) found in a cluster of bananas. *Phegea*, 34: 105.
- Danilevsky M.L. 2020. Catalogue of Palaearctic Chrysomeloidea (Vesperidae, Disteniidae, Cerambycidae). <https://www.cerambycidae.net/catalog.pdf> (Updated 06.07.2022).
- EPPO 2003. Introduction of *Phoracantha recurva* in the Mediterranean region: addition to the EPPO Alert List. *EPPO Reporting Service*, 9: 140 (<https://gd.eppo.int/reporting/article-2126>).
- Hanks L.M., Miller J.G., Paine T.D. 1998. Dispersal of the *Eucalyptus* Longhorned Borer (Coleoptera: Cerambycidae) in Urban Landscapes. *Environmental Entomology*, 27(6): 1419–1424.

**Конфликт интересов:** о потенциальном конфликте интересов не сообщалось.

**Conflict of interest:** no potential conflict of interest related to this article was reported.

### ИНФОРМАЦИЯ ОБ АВТОРАХ

**Сажнев Алексей Сергеевич**, кандидат биологических наук, старший научный сотрудник, Институт биологии внутренних вод им. И.Д. Папанина Российской академии наук, п. Борок, Ярославская область, Россия

**Зверева Варвара Андреевна**, ученица, британская школа The Grammar School, Лимассол, Кипр

### INFORMATION ABOUT THE AUTHORS

**Aleksey S. Sazhnev**, Candidate of Biological Sciences, Senior Researcher, Papanin Institute for Biology of Inland Waters of Russian Academy of Sciences, Borok vill., Yaroslavl Oblast, Russia

**Varvara A. Zvereva**, Student, The Grammar School, Limassol, Cyprus